



INTRODUCING THE NEW STANDARD IN RECOVERY TOWBARS FOR SERIOUS 4WD ENTHUSIASTS

- Recovery Rated
- Superior Strength
- Maximum Clearance



Merging over 65 years of Towbar expertise with tough 4×4 design, Hayman Reese launches the newest innovation in towbars, the X-Bar.

A rugged, go-anywhere towbar engineered for off-road. The X-Bar provides an increased departure angle and 3 rated recovery points to get you out of any situation while integrated bash plates keep you going when the going gets tough.



X-Bar explained

X-Bar. Built tough for offroad action

Recovery Rated

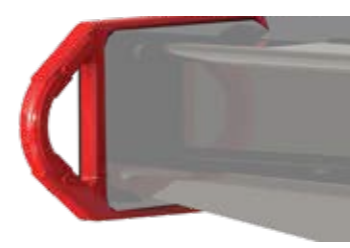
X-Bar provides a purpose designed and rated rear of vehicle recovery system encompassed in a fully ADR compliant towbar. Rated to 6500kg*, X-Bar recovery points get you out of trouble in a snatch.

Maximum Clearance

Improved clearance and departure angles compared with OEM and other aftermarket towbars. Bash plate protected and integrated accessory plug mounts for additional off-road protection.

Superior Strength

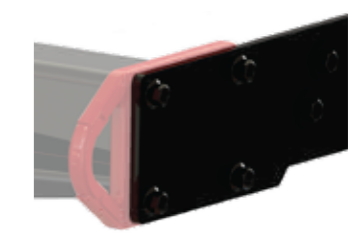
Fully forged TBM, 700 grade forged steel recovery points and increased side arm thickness versus standard towbars.



Easy to see, forged steel recovery points rated to 6500kg*



Forged steel center recovery point rated to 5000kg



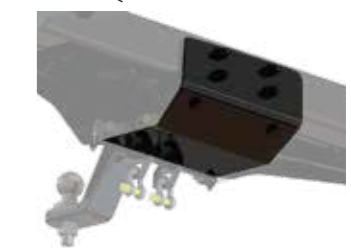
Heavy-duty side arms allow maximum strength and clearance



SmartPin™ enabled forged TBM



Twin integrated plug points for a smooth look and protection from impact



Integrated 3mm bash plate for added protection



* 6500kg recovery rating requires equalisation strap fitted to both side recovery hooks



FORD RANGER PX CAB CHASSIS

Nov 2011 - on Towing Capacity: up to 3500kg

Part Number	Tail	ECU
03230RW	1800mm	04835

HOLDEN COLORADO RG CAB CHASSIS

June 2012 - on Towing Capacity: up to 3500kg

Part Number	Tail	ECU
03231RW	400mm	04835 (LTZ) 04837 (DX, LX, LT)

ISUZU D-MAX TF CAB CHASSIS

June 2012 - on Towing Capacity: up to 3500kg

Part Number	Tail	ECU
03242RW	1200mm	N/A

NISSAN PATROL Y61 CAB CHASSIS LEAF SPRING

May 1998 - on Towing Capacity: up to 3500kg

Part Number	Tail	ECU
03236RW	1200mm	N/A

MAZDA BT50 UR CAB CHASSIS

Nov 2011 - on Towing Capacity: up to 3500kg

Part Number	Tail	ECU
03230RW	1800mm	04835

TOYOTA LANDCRUISER 79 CAB CHASSIS

Aug 2012 - on Towing Capacity: up to 3500kg

Part Number	Tail	ECU
03237RW	1200mm	N/A

MITSUBISHI TRITON MQ CAB CHASSIS

Jan 2015 - on Towing Capacity: up to 3100kg

Part Number	Tail	ECU
03238RW	1800mm	N/A

TOYOTA HILUX GUN CAB CHASSIS

June 2012 - on Towing Capacity: up to 3500kg

Part Number	Tail	ECU
03232RW	1800mm	04835

NISSAN NAVARA NP300 CAB CHASSIS

Mar 2015 - on Towing Capacity: up to 3500kg

Part Number	Tail	ECU
03235RW	1200mm	N/A

TOYOTA HILUX KUN CAB CHASSIS

Feb 2005 - Aug - 2015 Towing Capacity: up to 2500kg

Part Number	Tail	ECU
03233RW	1800mm	N/A

RECOVERY RATING

5000kg  CENTRE RECOVERY HOOK

3250kg  SIDE RECOVERY HOOK (SINGLE)

6500kg*  SIDE RECOVERY HOOK (DUAL)

Every X-Bar comes with:

- Hayman Reese vehicle specific SmartClick™ wiring harness
- Flat sided superior finish towball
- Rated D shackles
- Premium eCoat & powder coated protective finish
- Hayman Reese Limited Lifetime Warranty
- Tested to Australian Standards AS/NZS4177 in a NATA accredited laboratory

* 6500kg recovery rating requires equalisation strap fitted to both side recovery hooks



Customer Service
1800 812 017
info@haymanreese.com.au
x-bar.com.au

